



ike SMART CITY

Connecting cities with people.

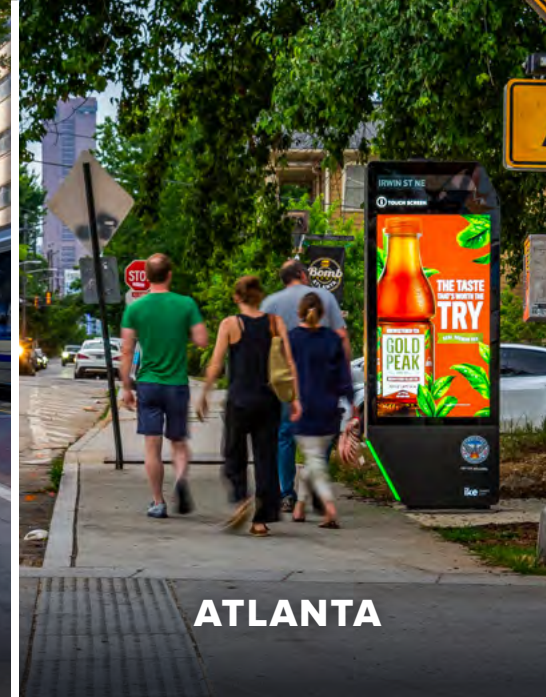
This document contains confidential trade secrets



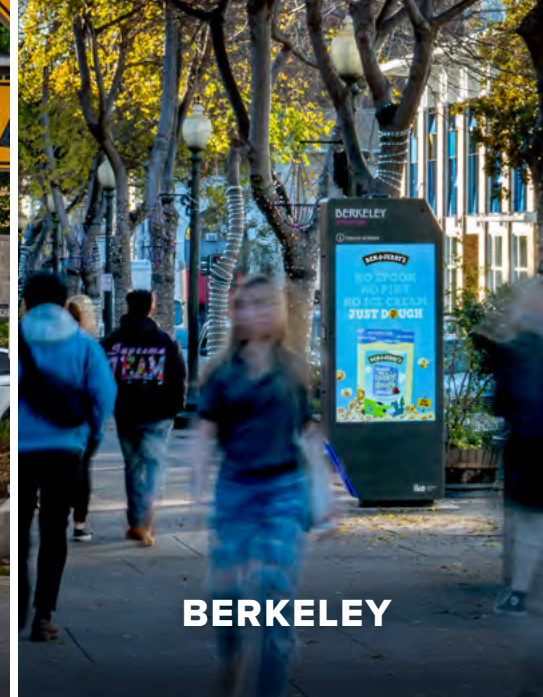
PHILADELPHIA



HOUSTON



ATLANTA



BERKELEY



PHOENIX



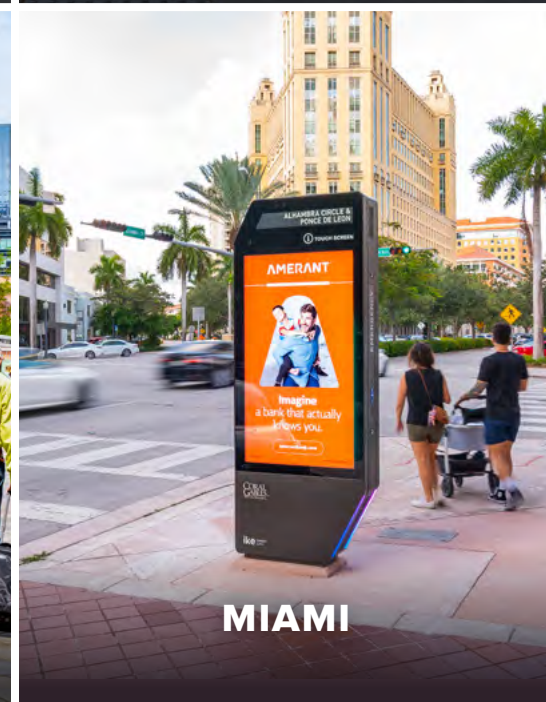
TAMPA



DETROIT



DENVER



MIAMI



CLEVELAND



RALEIGH



ST. LOUIS



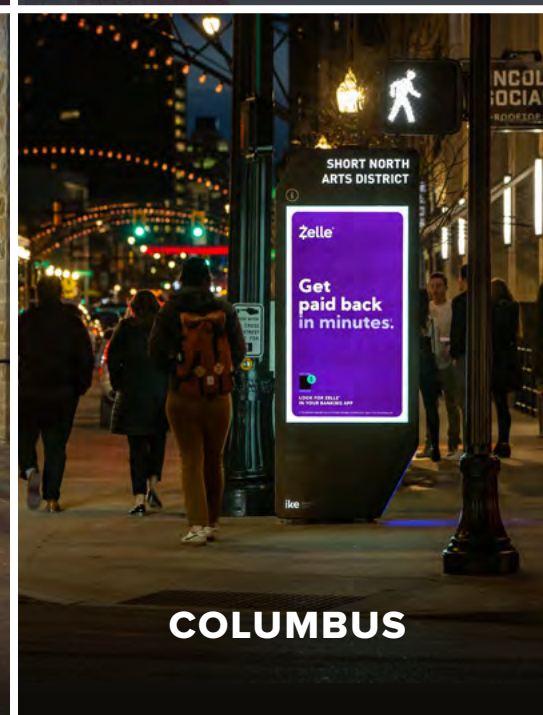
PITTSBURGH



BALTIMORE



SAN ANTONIO



COLUMBUS



CINCINNATI

MOBILE CONQUESTING

Increase your **REACH** and increase your **FREQUENCY** to increase your **RESULTS!**

HOW IT WORKS:



A virtual “fence” is traced around each kiosk location to build an audience based on crossing the “fence” during the specified **timeframe**. This can also be applied to any additional location you would like to target.



When a person enters the “fenced” location during the set timeframe, they will then become part of an audience that can later be targeted.



As this person visits various apps or uses the internet on mobile browsers, they begin to see digital ads from you.



This person can see those ads for up to 30 days after they had entered the “fenced” location.



When this person enters a home wifi network, it will link to their Mobile ID, allowing you to reach the devices in their entire household. As an additional option, at no cost to you, this unlocks exponentially more influential touchpoints on the path to purchase. You can deliver relevant content and offers when it matters most, driving consideration and conversions across all devices.

.....

Mobile Conquesting is \$15 CPM (Cost Per One Thousand Impressions)

For example – Spend **\$1,875/mo @ \$15 CPM = 125,000 Impressions!**

Available impressions vary by location.

*Video can be utilized for an additional cost. Additional digital options are also available. Contact your AE for details.

MEET ike

The Interactive Smart City Digital Kiosk

IKE delivers your message at street level in the dense urban core and **trendiest neighborhoods**. The network spans the city with key locations in **high traffic areas** providing the **best coverage in the market**.

Placements with Purpose

- ▶ Urban core environments
- ▶ Coveted neighborhoods with limited OOH
- ▶ Prominent locations encourage pedestrian exploration
- ▶ Community equity

Fully Interactive Capabilities

- ▶ Immersive touch-screen technology
- ▶ Relevant content refreshed continuously
- ▶ Real-time community outreach

Impactful design

- ▶ Double-sided and over 8 feet tall
- ▶ 65" full-motion digital screens
- ▶ LED lighting to draw the eye

**Check with sales representatives about possible restrictions*



TAMPA, FL

sales@ikesmartcity.com

(614) 294-4898

ike SMART CITY



UPTOWN



DOWNTOWN

HOUSTON, TEXAS

DMA RANKING: 6TH

HOUSTON LOCATIONS

Neighborhoods

Downtown/EaDo

Downtown is a dynamic mix of commerce, culture, and civic districts, including a vibrant theater district. It is a vital transportation hub, connecting the City via public transit and highways to key destinations: **Minute Maid Park** (MLB's Astros), **Toyota Center** (NBA's Rockets), Discovery Green Park, and the convention center. EaDo, short for "East of Downtown," is the fastest growing area of the City, home to young professionals who want to live close to work as well as trendy bars, cool shops, and destinations including **PNC Stadium** (MLS Dynamos, TSU Football).

Greater Heights

"The Heights" is a collection of pedestrian-friendly neighborhoods northwest of Downtown where families and young professionals fill local coffee shops, restaurants, specialty stores, antique shops, bars, and entertainment venues.

Midtown (Montrose, Westmoreland)

Midtown is a trendy urban neighborhood among young professionals, popular for its vibrant nightlife, access to public transit, and endless coffee shops, parks, restaurants, shops, bars, theaters, and night clubs. The upscale communities of Montrose and Westmoreland mix urban and suburban, close to work and luxury boutiques, trendy eateries & coffee shops, and chic bars.

Museum District (Old Braeswood, Rice Village, University Place)

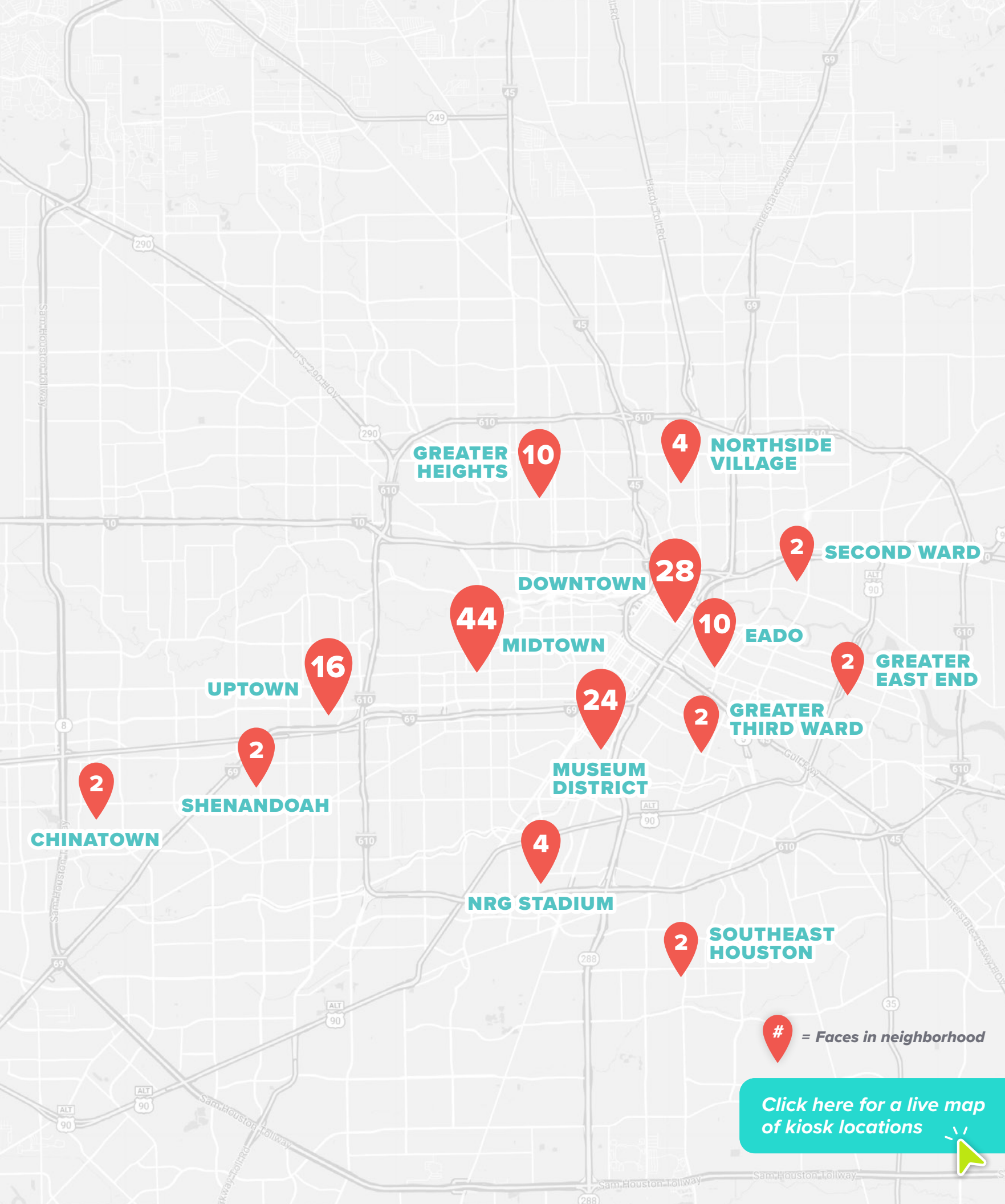
The Museum District attracts over 6 million visitors to its 19 museums, close to restaurants, **Rice University**, the **Houston Zoo**, and **Texas Medical Center**, the world's largest medical complex with over 100,000 employees and 8 million patients per year. Residents of Old Braeswood, University Place, and Rice Village buzz about commercial corridors filled with eclectic boutiques and eateries.

Uptown (Galleria, Afton Oaks)

With 200,000 professionals working at around 2,000 companies, Uptown is one of the largest U.S. business districts sitting outside of a downtown area. The Galleria is a world-renowned shopping destination with more than 400 stores and over 30 million annual visitors. Afton Oaks is an exclusive neighborhood close to all the best that Uptown has to offer.

Extending across Houston's Dynamic Neighborhoods

- Chinatown
- Greater East End
- Greater Third Ward (University of Houston, Texas Southern University)
- Northside Village (Greater Northside)
- NRG Stadium (NFL's Houston Texans)
- Second Ward
- Shenandoah
- Southeast Houston





DOWNTOWN ATLANTA

ATLANTA, GEORGIA

DMA RANKING: 7TH

sales@ikesmartcity.com

(614) 294-4898

ike SMART CITY

ATLANTA LOCATIONS

Neighborhoods

Downtown

As the economic powerhouse of the Southeast, Downtown Atlanta is a hub of Fortune 500 HQs including Coca-Cola, Delta, and Home Depot, and Downtown destinations: **Mercedes-Benz Stadium (NFL/MLS)**, **State Farm Arena (NBA)**, Georgia World Congress Center, Georgia Aquarium, and **Georgia State University**.

Buckhead

This affluent neighborhood is Atlanta's financial hub and premier high-end shopping destination for the Southeast with hundreds of designer shops and luxury brands at **Phipps Plaza** and **Lenox Square** (including Jimmy Choo, Louis Vuitton, Versace, Saint Laurent, Hermes, Dior), posh high-rise condos and hotels, trendy restaurants, chic bars, and rooftop lounges.

East Atlanta Village (EAV)

EAV is Atlanta's hottest destination for live music, eclectic shops, and locally owned dining spots with a diverse mix of people filling outdoor patios, artisan bakeries, yoga studios, gastropubs, and friendly bars.

Inman Park

East of Downtown, Inman Park is a walkable historic neighborhood with easy access to the Atlanta BeltLine. Nearby Krog St Market and Irwin St Market offer food halls, artisan shops, coffeehouses, cafes, and bars.

Midtown

Just north of Downtown, Midtown is the heart of arts and culture in Atlanta with over 70,000 daytime workers, 20,000 residents, and over 6 million visitors bustling between **Midtown Mile** shops, luxury high-rise condos, theatres, dining, and ultra-cool night clubs. Midtown is easily accessible to I-75/I-85, MARTA, and circulators.

Morningside-Lenox Park

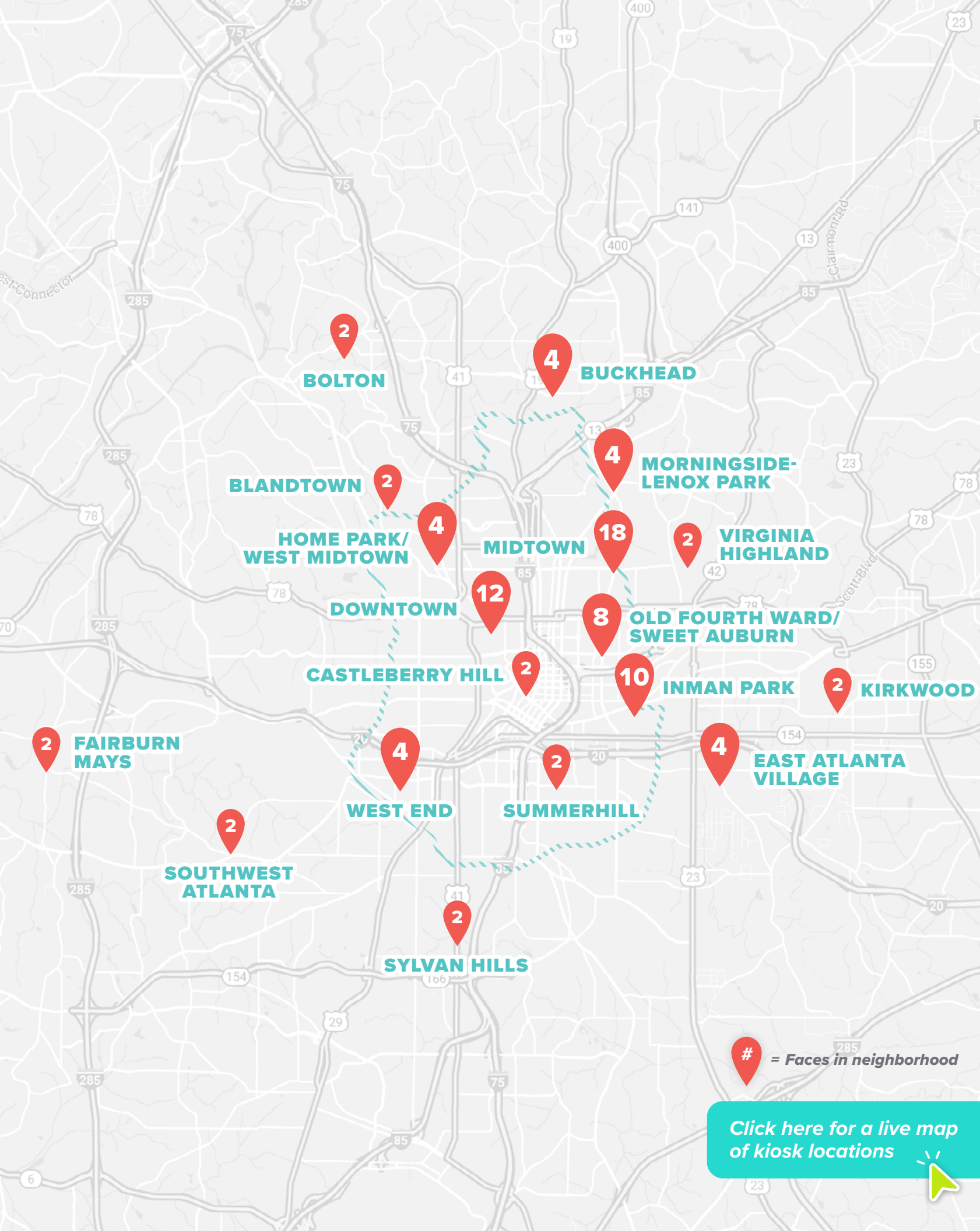
Morningside-Lenox Park's diverse community fills local shops, outdoor dining, and farmers' markets, all close to the Beltline's Eastside Trail and **Emory University**, the largest employer in the metro-Atlanta area.

Old Fourth Ward

Located between Downtown and Inman Park, the historic Old Fourth Ward (O4W) is a mix of cool living spaces, retail shops, outdoor venues, trendy restaurants, coffee shops, and nightlife.

Extending across Atlanta's Dynamic Neighborhoods

Blandtown	Southwest Atlanta
Bolton	Summerhill (Georgia State University event venues)
Castleberry Hill	Sweet Auburn
Fairburn Mays	Sylvan Hills
Home Park/West Midtown (Georgia Tech)	Virginia Highland
Kirkwood	West End





DOWNTOWN BERKELEY

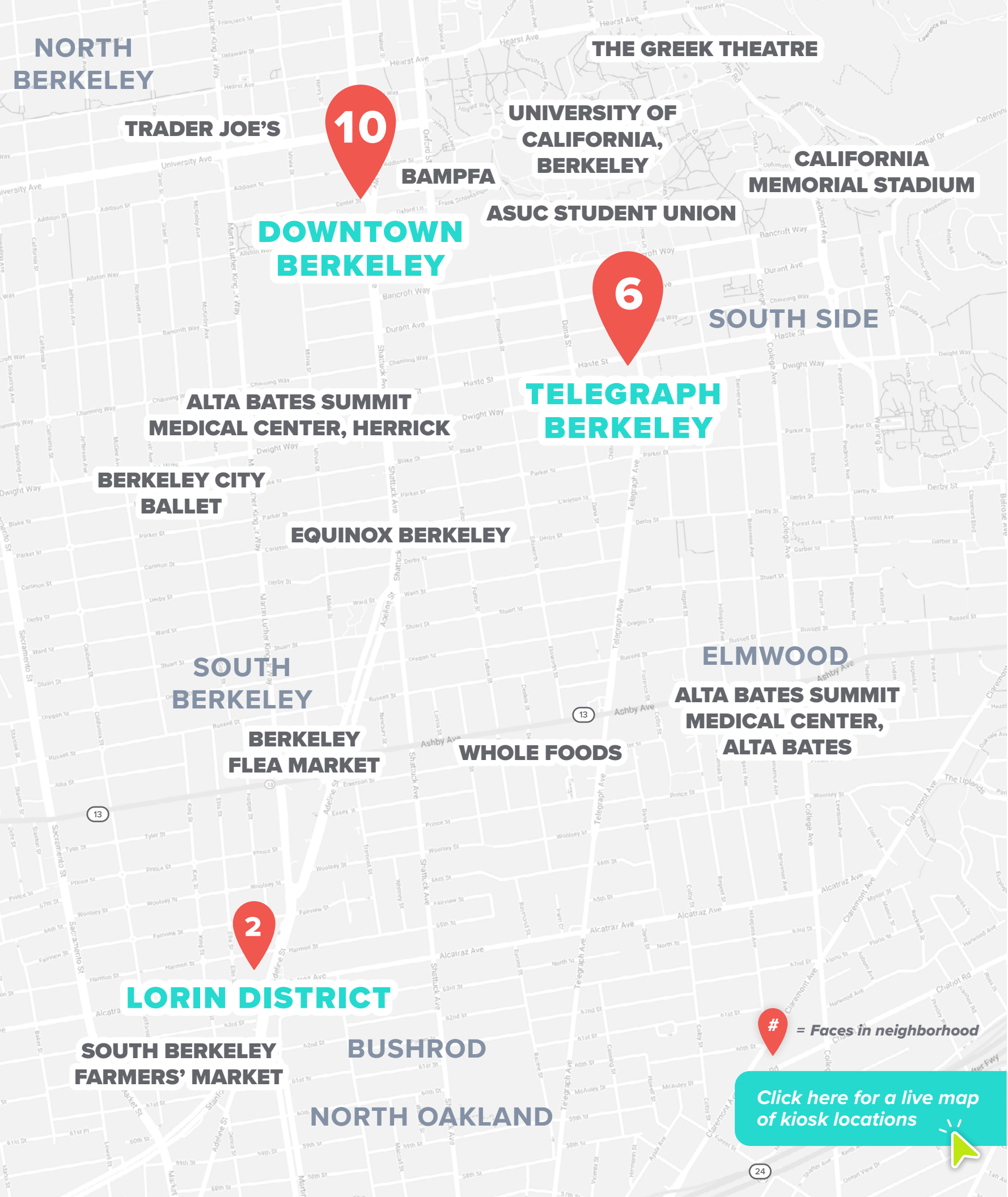
BERKELEY, CALIFORNIA

DMA RANKING: 10TH

sales@ikesmartcity.com

(614) 294-4898

ike SMART CITY



SAN FRANCISCO BAY AREA LOCATIONS

Berkeley

The City of Berkeley goes beyond the hippie culture of its past to become a haven for foodies, arts, and culture. With farm-to-table restaurants, which began here, ethnically diverse eateries, and a plethora of museums and performance spaces, such as UC Berkeley's Hearst Greek Theater, the 8500-seat outdoor amphitheater, many millennials and young professionals have made a home among the students, faculty, and staff of University of California, Berkeley.

Neighborhoods

Downtown Berkeley

Just west of UC Berkeley, Downtown Berkeley is the cultural hub of this vibrant city with lively music venues, intimate theaters, and world-class museums including UC, Berkeley Art Museum & Pacific Film Archive (BAMPFA). With an average of 11,000 daily riders emptying at the Downtown Berkeley BART station, this area is teeming with students, faculty, and philosophers gathering at local coffeehouses, eclectic restaurants, and trendy bars.

Lorin District

This historic commercial district is home to South Berkeley Farmers' Market and Berkeley Flea Market, easily accessible to Ashby BART station, bus lines, and nearby freeways. This diverse southside neighborhood is filled with antique shops, boutiques, cafes, coffeehouses, brewpubs, galleries, and theaters, including Shotgun Players and Black Repertory Group Theater.

Telegraph Avenue District

With over 40,000 enrolled students at UC Berkeley, this area south of campus is dominated by the undergraduate student population. The young, diverse students hustle by colorful street vendors, inexpensive eateries, coffee shops, record stores, vintage shops, and bookstores.



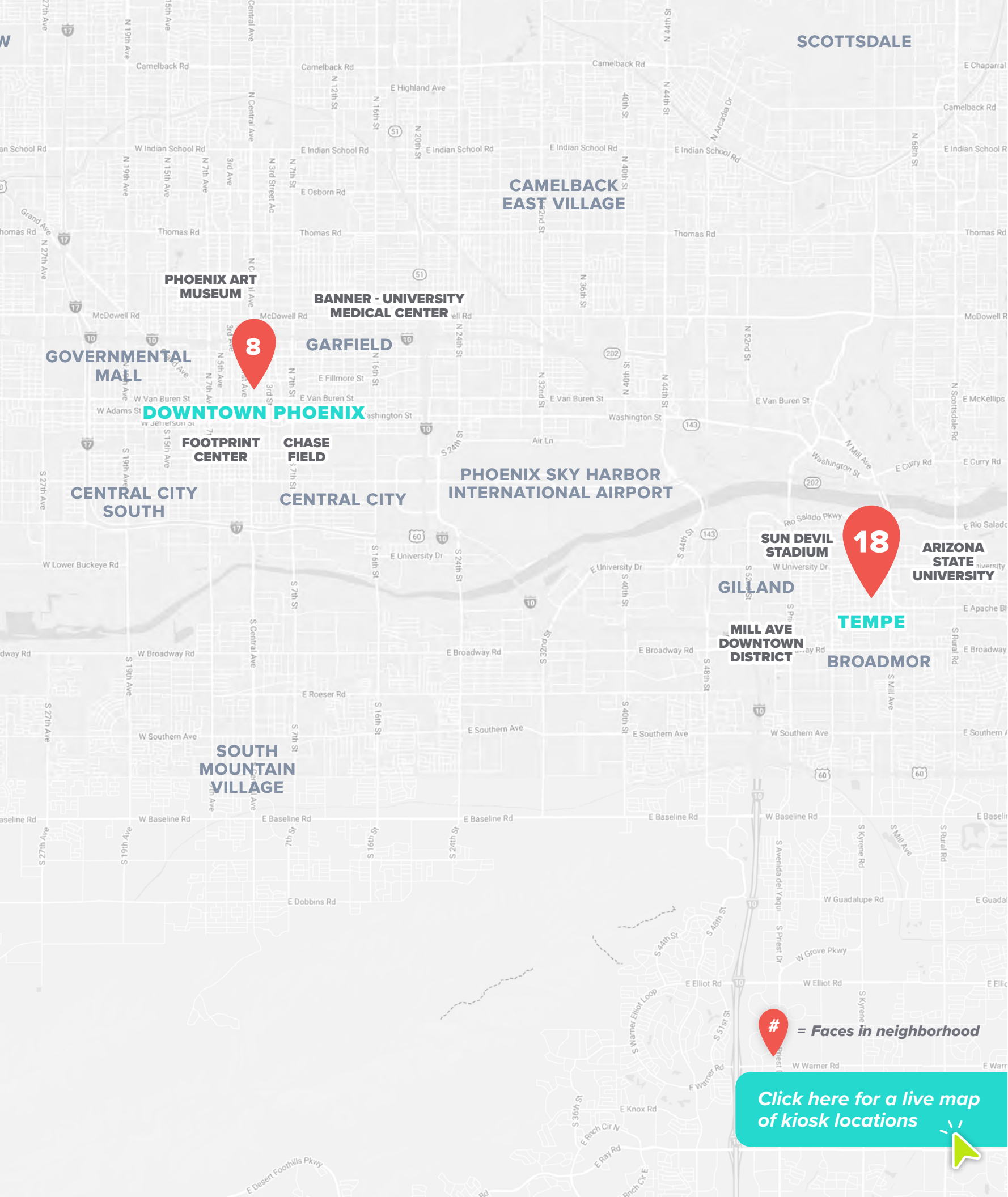
MILL AVENUE DOWNTOWN TEMPE



MILL AVENUE DOWNTOWN TEMPE

PHOENIX, ARIZONA

DMA RANKING: 11TH



PHOENIX LOCATIONS

Neighborhoods

Downtown Phoenix

As the vibrant urban core of Phoenix, Downtown is constantly bustling with activity from day into night as a diverse mix of residents, workers, and students hustle between luxury apartments, high-rise offices, boutiques, retail, coffee shops, sports bars, trendy restaurants, and nightlife. **Roosevelt Row** is pedestrian-friendly arts district attracting crowds year-round to its galleries, restaurants, bars, and shops, hosting monthly First Fridays Art Walks and annual festivals.

Downtown Phoenix is the destination for major league sports, entertainment, and culture, welcoming millions to popular arenas, theaters, and cultural institutions, including **Chase Field** (MLB's Arizona Diamondbacks), **Footprint Center** (NBA's Phoenix Suns), Phoenix Convention Center, Heard Museum, and Arizona Science Center.

As the Central Hub for the metro area, Downtown Phoenix is easily accessible by light rail, downtown circulator, bus, freeway, and just four miles from Sky Harbor Airport.

Downtown Tempe

Known for **Arizona State University**, Tempe combines the best aspects of a college town with the big-city feel of Phoenix. An annual enrollment of more than 50,000 ensures non-stop activity around the school and surrounding area. With its proximity next to campus, Downtown Tempe serves as a hip hangout that attracts crowds of young professionals and students with over 100 restaurants, taverns, nightclubs, and boutiques in a one-mile radius.

The eternally sunny environment means outdoor activities are highly popular with hikers visiting the elevated Hayden Butte Park for panoramic views of the city before cooling off at one of the many eateries near the foot of the famous "A" Mountain. As a cultural hub within the Phoenix area, Tempe has an abundance of arts and entertainment with the iconic **Sun Devil Stadium** and institutions like the Arizona Heritage Center, ASU Art Museum, and ASU Gammage performing arts center.

There's no shortage of public transit options as light rail, neighborhood circulators, buses, and streetcars all travel through the area and ensure easy accessibility.



DOWNTOWN

TAMPA, FLORIDA

DMA RANKING: 13TH

sales@ikesmartcity.com

(614) 294-4898

ike SMART CITY

TAMPA LOCATIONS

Neighborhoods

Downtown

Downtown Tampa is the vibrant economic, cultural, and entertainment hub of the City. With beautiful weather year-round, residents and visitors flock to constant events at Amalie Arena (Home to NHL's Lightning), Tampa Convention Center, Curtis Hixon Waterfront Park, Tampa Theatre, Straz Center for the Performing Arts, and a myriad of museums. Downtown is easy to access via I-75 and get around with water taxis and streetcars as the 2.6-mile Riverwalk bursts with activity connecting people to waterfront parks, restaurants, shops, and attractions.

Channel District

The Channel District is a revitalized residential waterfront neighborhood just east of Downtown. The ever-changing landscape of luxury high-rises in this pedestrian-friendly area draws millennials, empty-nesters, and young professionals to this growing neighborhood with easy access to Downtown entertainment, culture, and recreation via the Riverwalk, streetcar, and water taxi. Swarming with activity, the Florida Aquarium hosts 300 events each year and the adjacent Sparkman Wharf buzzes with shoppers, diners, and music lovers.

SoHo Tampa/Hyde Park

The neighborhoods of SoHo Tampa and Hyde Park are just west of Downtown; with a mix of suburban and urban vibes, it's a vibrant home for young professionals and families. In SoHo Tampa, the pedestrian-friendly, tree-lined streets of South Howard Avenue are packed with eclectic shops, eateries, and coffee shops. SoHo Tampa buzzes with activity into the night as an entertainment district with a lively bar scene and nightlife.

Extending across Tampa's Dynamic Neighborhoods

- East Tampa
- Old West Tampa
- Tampa Heights



[Click here for a live map of kiosk locations](#)



COMERICA PARK

DETROIT, MICHIGAN

DMA RANKING: 14TH

sales@ikesmartcity.com

(614) 294-4898

ike SMART CITY

DETROIT LOCATIONS

Neighborhoods

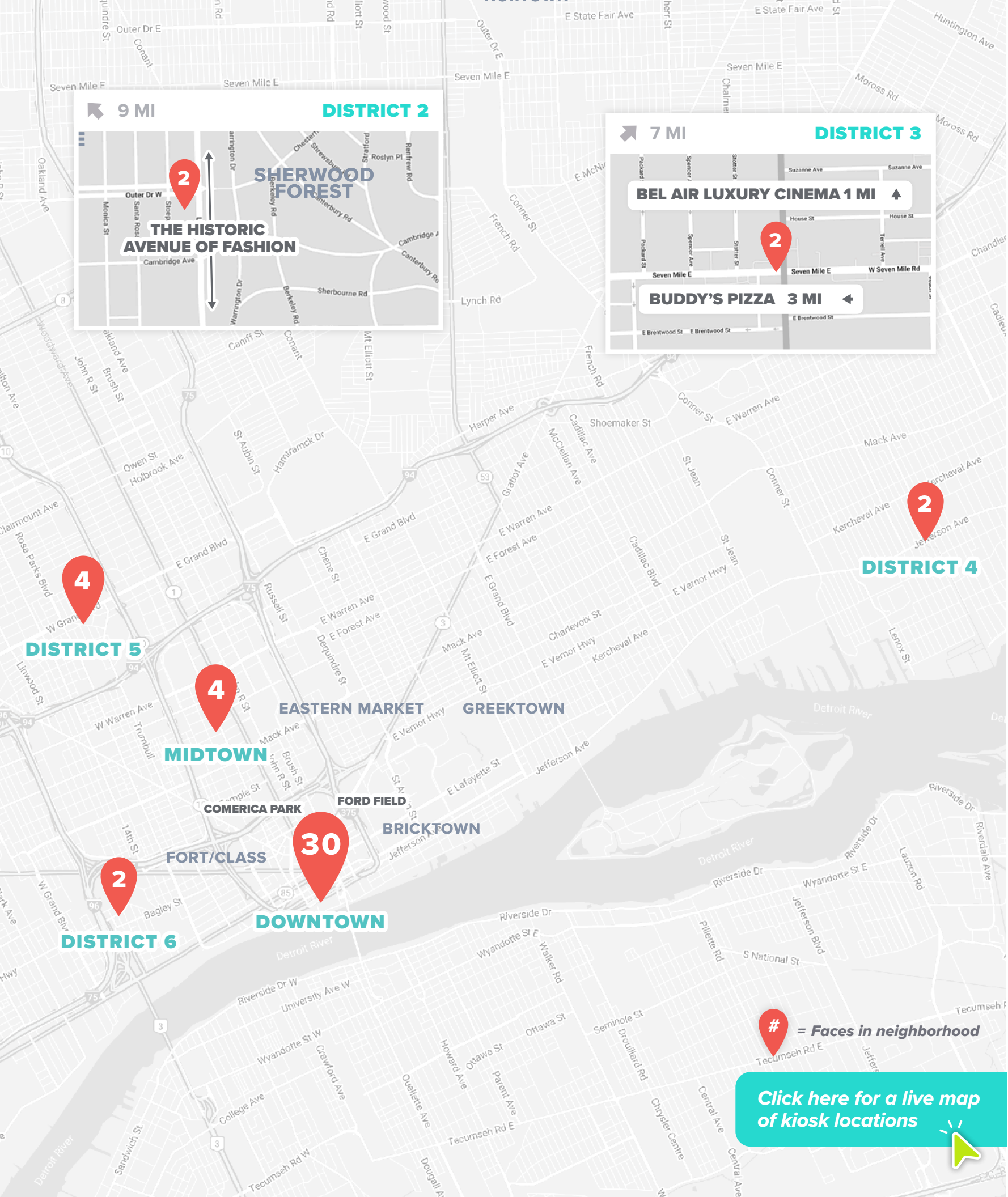
Downtown

Located along the Detroit River on the border of Canada, Downtown serves as both the Central Business District and the entertainment hub of the City. With the global headquarters for GM, conventions and events at **Huntington Place**, sporting events at **Comerica Park** (MLB's Tigers) and **Ford Field** (NHL's Lions), three world-class casinos (**MGM Grand Detroit**, Greektown, Motor City), and beautiful historic theatres including the Fox Theatre, Detroit Opera House, and the Fillmore, residents and visitors pour into the area all year long. Adjacent to Downtown in District 5, **Eastern Market**, the oldest and largest farmer's market in the U.S., crowds six city blocks with 250 vendors and up to 40,000 weekly shoppers.

Easily accessible by freeway to the surrounding Districts and suburbs, Downtown is a vibrant area with a mix of offices, residences, specialty shops, trendy restaurants, cool hangouts, and endless entertainment.

Extending across Detroit's Dynamic Districts

- District 2 (Livermois & Outer Dr W, The Historic Avenue of Fashion)
- District 3 (Seven Mile & VanDyke)
- District 4 (Jefferson Ave & Chalmers St)
- District 5 (W Grand Blvd & Milwaukee Ave)
- District 6 (Bagley St & 24th St)
- Midtown (Cass Ave & W Canfield)





LODO



DOWNTOWN/CENTRAL BUSINESS DISTRICT

DENVER, COLORADO

DMA RANKING: 16TH

DENVER LOCATIONS

Neighborhoods

Downtown/Central Business District

In the middle of the city, the Central Business District (CBD) is the economic hub of the city and is home to many of Denver’s largest economic sectors. In addition to business, the CBD is also a hotspot for visitors with the Colorado Convention Center hosting over 230 events a year, and being within walking distance to 10,000 hotel rooms, 300 restaurants and 9 theaters. The district is also packed with fashionistas and socialites as the high-traffic 16th Street Mall attracts droves with over 42 outdoor cafes, and an additional 24 shops and restaurants.

Denver Theatre District

This vibrant cultural hub is in the heart of Downtown where public art is everywhere, activating a unique urban experience. The 12-acre campus of the Denver Performing Arts Complex has 10 performing spaces, including stages and public spaces for performances by the Colorado Ballet, Colorado Symphony, Opera Colorado, and multiple theatre companies at the Center for the Performing Arts. With over 300 days and nights of programming and over 500,000 visitors a year, this colorful area is buzzing with creative activity all year long.

LoDo

Denver’s oldest neighborhood is home to some of the city’s best-known restaurants, galleries, shops, and boutiques. Officially known as the Lower Downtown Historic District, LoDo boasts over 20 art galleries, 100 restaurants and clubs, and dozens of professional, service and retail businesses. At the center of the district, the historic Denver Union Station offers public transit in a unique mixed-use space that also includes fine dining, boutique stores, and a luxury hotel. Central to Denver’s sports scene, LoDo is sandwiched between Coors Field, the 50,000 seat stadium for MLB’s Rockies and the Pepsi Center, the 18,000-seat arena for the NBA’s Nuggets and NHL’s Avalanche.





BRICKELL

MIAMI, FLORIDA

DMA RANKING: 18TH

sales@ikesmartcity.com

(614) 294-4898

ike SMART CITY



MIAMI LOCATIONS

Neighborhoods

Downtown Miami
Miami's vibrant, dense urban core is located on the beautiful Biscayne Bay, brimming with activity at all hours. As the Central Business District, workers bustle into high-rise offices and as a cultural hub, residents and visitors stream into premier museums and entertainment venues: Pérez Art Museum Miami, Adrienne Arsht Center for Performing Arts, Frost Museum of Science, FPL Solar Amphitheatre at Bayfront Park, and **Kaseya Center** (NBA's Heat).

Allapattah
Allapattah's shops, food, and culture showcase its diverse Latin roots at the 10,000-SF Allapattah Market plus music & dancing at Club Tipico Dominicano; also home to the renowned Rubell Museum.

Brickell
Brickell is the fast-paced financial hub densely packed with international banks and modern skyscrapers of luxury residences, world-class hotels, and high-rise offices. **Brickell City Centre** features three city blocks of curated upscale shops, premier dining, and endless entertainment.

Coconut Grove
"The Grove" has a laid-back, artsy vibe and a strong sense of community. Pedestrians pack tree-lined sidewalks on streets filled with cafes, boutiques, coffee shops, galleries, and friendly bars.

Coral Gables / Coral Way
Serving as a backdrop for those living luxuriously within Miami, Coral Gables has the **Miracle Mile**, in the heart of the business district running past high-end retailers, shopping complexes, and sports car dealerships. Coral Gables also offers top-notch museums, theatres, fine dining, and nightlife.

Edgewater / Midtown
At the crossroads of Miami's top cultural destinations, these diverse communities offer luxury shopping, high-end dining, trendy bars, and high-rise residences.

Miami Design District / MiMo
Brimming with creatives, fashionistas, foodies, and art lovers, this 18-square-block shopping and arts Design District has luxury boutiques, fine dining, art galleries, trendy bars, and the art institution, ICA Miami. The Miami Modern style shines in the revitalized MiMo District with retro hotels, vintage shops, eclectic eateries, and ultra-cool happy hours.

Wynwood
The vibrant, ultra-cool neighborhood of Wynwood has the highest concentration of street art in the world. This pedestrian-friendly cultural hub is chock-full of old textile warehouses transformed into art galleries, eclectic boutiques, trendy restaurants, artisanal coffee houses, craft breweries, and nightlife.

Click here for a live map of kiosk locations



GATEWAY DISTRICT



NORTH COAST HARBOR



CAMPUS DISTRICT

CLEVELAND, OHIO

DMA RANKING: 19TH

CLEVELAND LOCATIONS

Neighborhoods

Downtown

As the heart of Downtown, the Civic Center District includes the busiest and most iconic buildings: the historic Standard building, Huntington Convention Center, Key Tower, Terminal Tower, and 200 Public Square. Professionals and City Hall politicians walk beside shoppers at the huge two-story Galleria mall. Year round, crowds gather at Public Square, the City's downtown park, which is connected to key bus lines and main commuter routes.

Campus District and University Circle

As the center for arts, education, and medicine in Downtown, the Campus District is flooded with students, doctors, and patients attending either Cleveland State University, the St. Vincent Charity Medical Center, or Cuyahoga Community College. Further east on Euclid Avenue is University Circle, home to the Cleveland Clinic, Case Western Reserve University and Hospitals, as well as cultural institutions such as Cleveland Museum of Art and MOCA Cleveland. Filled with restaurants, shops, galleries, museums, performance venues, and green spaces, the Campus District and University Circle are bustling with non-stop commuters, pedestrians, and vehicular traffic.

Gateway and Tower City

Cleveland's destination for sports and entertainment, the Gateway and Tower City Districts bring event-goers from all over the state. Fans pack the 35,000-seat Progressive Field and 20,000-seat Rocket Mortgage FieldHouse, and nearby East 4th Street draws diners, shoppers, and music lovers to the Arcade mall and the House of Blues Cleveland. Tower City Center connects office buildings, a three-story shopping mall, and the JACK Cleveland Casino and is also the transit hub for Cleveland's four rapid transit lines.

Ohio City and Edgewater Hill

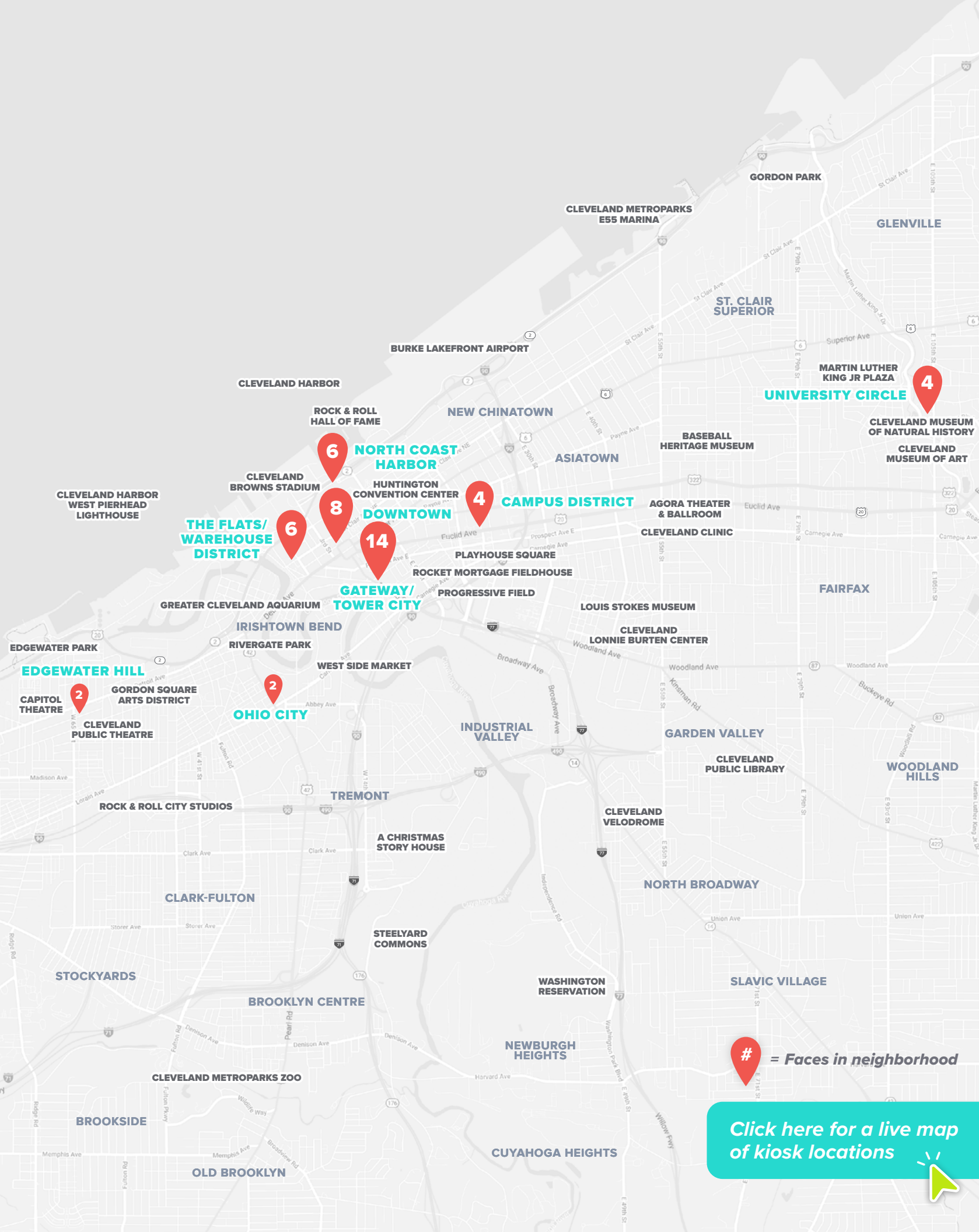
Two of the fastest growing neighborhoods along the Red Line rail, west of Downtown Cleveland, are Ohio City and Edgewater Hill, buzzing with young professionals, millennials, and entrepreneurs in these pedestrian-friendly, diverse communities with trendy bars, coffee houses, cafes, and artisan shops. The colorful, painted walls in Ohio City welcome neighbors and visitors as they explore the neighborhood, including West Side Market, the renowned indoor farmer's market with over 100 vendors.

North Coast Harbor

North Coast Harbor is where Downtown Cleveland meets Lake Erie. North Coast Harbor is always busy as Cleveland natives and visitors head to popular destinations: the world-famous Rock and Roll Hall of Fame and Museum, the Great Lakes Science Center, the 67,000-seat Cleveland Browns Stadium (NFL), Voinovich Bicentennial Park, Goodtime III Sightseeing Ship, and Burke Lakefront Airport, Cleveland's premier business airport.

The Flats and Warehouse District

Two adjacent, redeveloped areas, the Flats and Warehouse District, are the go-to locale for Downtown's nightlife. Located on the rapid rail line and close to the Greater Cleveland Aquarium, the Flats is the premier destination for a night out at trendy restaurants, beer gardens, and clubs. Just west, the Warehouse District is a historic business and residential neighborhood with an inviting mix of fine dining, vibrant nightlife, and boutique shopping.





DOWNTOWN

RALEIGH, NORTH CAROLINA

DMA RANKING: 22ND

sales@ikesmartcity.com

(614) 294-4898

ike SMART CITY

RALEIGH LOCATIONS

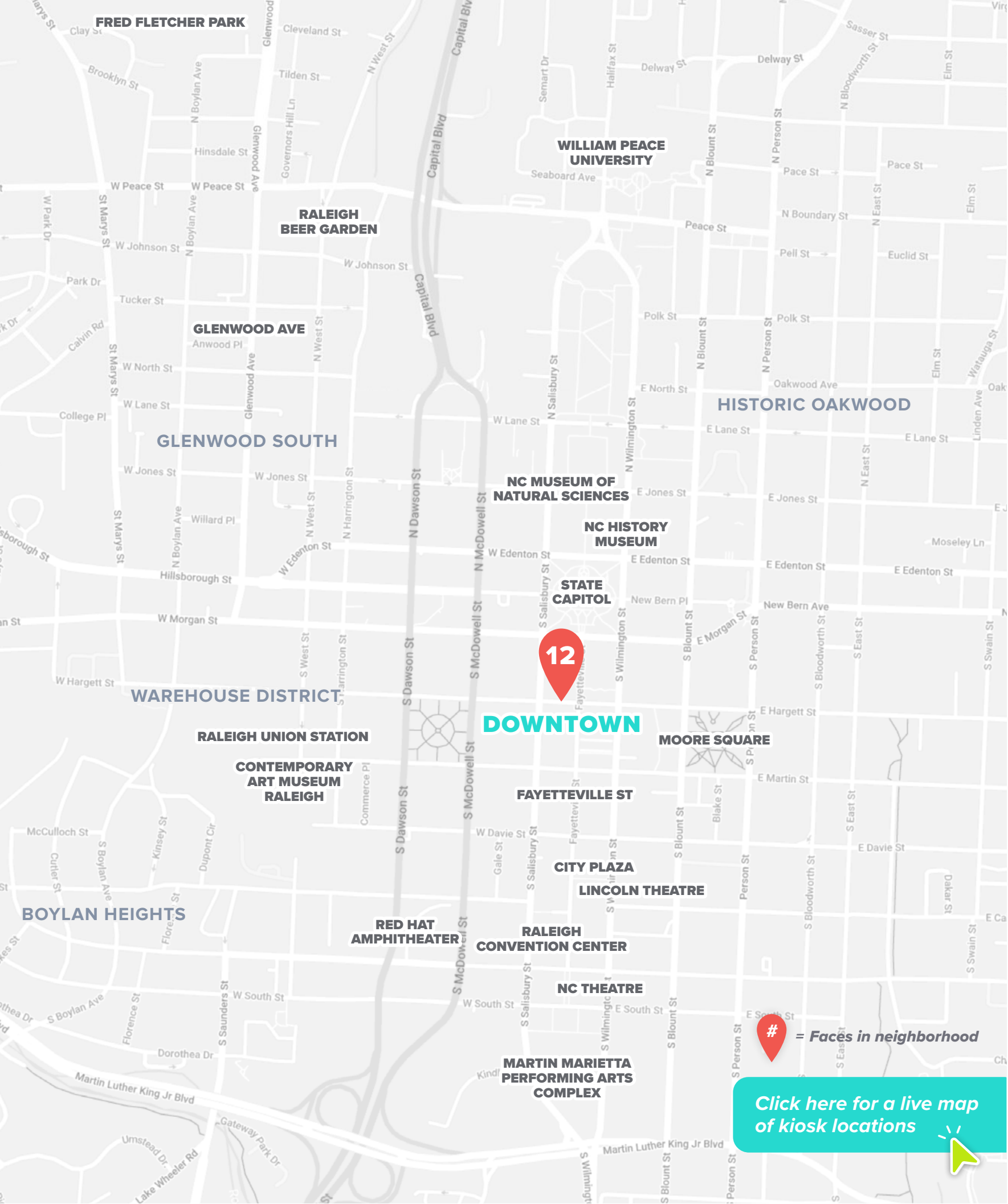
Neighborhoods

Downtown Raleigh

Downtown Raleigh teems with life and excitement as the epicenter of the state capital city. Modern skyscrapers are home to diverse businesses, from leading financial firms to innovative tech start-ups. The Raleigh Convention Center and Performing Arts Complex, City Plaza, Marbles Museum, and Lincoln Theatre serve as hubs for events drawing crowds year-round.

The vibrant neighborhood of **Glenwood South** centers on a half-mile of trendy bars and restaurants, salons, art galleries, and fitness studios lining Glenwood Avenue and its cross streets, inviting young professionals, hipsters, and foodies to endless options, all within walking distance of their homes in new luxury apartments and condos.

Between the heart of Downtown and North Carolina State University, the **Warehouse District** is a mix of students, professionals, visitors, and residents. This vibrant neighborhood is always bustling with activity from day into night at the Raleigh Union Station transit hub and revitalized buildings, offering modern residences, eclectic shops, innovative office spaces, trendy eateries, and lively nightlife.





BALLPARK VILLAGE



CENTRAL WEST END



OLD NORTH ST. LOUIS

ST. LOUIS, MISSOURI

DMA RANKING: 24TH

ST. LOUIS LOCATIONS

Neighborhoods

Downtown

This walkable one-square-mile footprint is filled with attractions, sports, events, green space, dining, nightlife, and history. On the banks of the Mississippi River, Gateway Arch National Park houses the city's most iconic structure and welcomes those traveling west. Downtown St. Louis contains an abundance of residents and visitors as fans visit Busch Stadium, the 45,000-seat stadium of MLB's Cardinals, and Enterprise Center, the 18,000-seat arena for the NHL's Blues. This easily accessible hub has eight MetroLink rail stations, bike lanes, a trolley, sidewalks, and constant vehicular traffic. As a premier locale for food and entertainment, Downtown always provides exciting experiences with more than 300 restaurants, 200 annual events, and 26 festivals.

Academy/Sherman Park

With strong community ties, the Wohl recreation center offers programs year-round to all ages.

Benton Park

In addition to the City's best Mexican cuisine, the diverse and vibrant Cherokee St is lined with art galleries, performance venues, eclectic restaurants, coffee shops, casual bars, and antique shops.

Central West End

Named one of America's Top 10 Great Neighborhoods, the prestigious Central West End is located in the heart of the City situated between Saint Louis University and Forest Park – the seventh largest urban park in the nation and home to the St. Louis Zoo. Featuring an eclectic mix of St. Louis' best dining, entertainment, shopping, nightlife, galleries, and hotels, the neighborhood is a destination for visitors and affluent residents who stroll this pedestrian-friendly area both day and night. The Cathedral Basilica of Saint Louis, one of the City's most popular attractions, draws crowds that congregate to tour the largest collection of mosaics in the world year-round. This mixed-use District stretches just under a mile and is easily accessible by the MetroLink rail.

Midtown/Grand Center Arts District

Eclectic venues line the streets of the Grand Center Arts District, a vibrant fusion of culture, cuisine, and visual and performing arts. Just north of the Saint Louis University campus, this popular destination offers dozens of museums and galleries, more than 15 theaters, 20 restaurants and bars, two hotels, two performing arts parks, and eight schools and universities. At just one mile, 175-acre radius, the Grand Center Arts District welcome nearly two million patrons per year.

Old North St. Louis

Established in 1816 as an independent village, Old North St. Louis has experienced a revitalization with three separate National Register Historic Districts located within its lively boundaries. With a clear view of the Gateway Arch, the reborn Fourteenth Street Mall attracts a high amount of traffic with trendy art galleries, salons, boutiques, and other retailers. Residents and visitors also flock to the neighborhood for many beloved cafes, eateries, and popular community gardens.





INNER HARBOR



FEDERAL HILL



CAMDEN YARDS

BALTIMORE, MARYLAND

DMA RANKING: 28TH

BALTIMORE LOCATIONS

Neighborhoods

Downtown

The city's central business district teems with commuters utilizing Charles Center Station, the Metro SubwayLink transit hub, which is within walking distance to city landmarks, upscale residential towers, 25 bus stops, and office buildings, including the 22-story One Charles Center. The area is also home to the historic 440-room Lord Baltimore Hotel and The Grand, a 45,000-SF event space.

Bromo Arts District

Between the central business district and Mount Vernon, this vibrant arts and entertainment district is humming with creatives, art lovers, theater goers, and music fans who fill eclectic shops, eateries, bars, galleries, theaters, and destinations: Lexington Market, Hippodrome, and Everyman Theater.

Camden Yards

At the heart of baseball in Baltimore, Camden Yards is always busy and especially packed during game days. MLB fans come in droves as Camden Yards, the 45,000-seat home of the Orioles, sits directly between Inner Harbor and Ridgely's Delight. Crowds flock to nearby bars and restaurants before & after games, and fans pay homage year-round to the birthplace of baseball legend Babe Ruth.

Federal Hill/Cross Street Market

Baltimore's trendy Federal Hill neighborhood is a hotspot of activity with tons of boutiques, restaurants, bars, and art galleries. Known for the best vantage point in the city, residents and visitors flock to the area to catch picturesque views of Inner Harbor and Downtown. At the center of the action, the historic Cross Street Market welcomes endless patrons via easily accessible public transit.

Fell's Point

Fell's Point is one of the most historic parts of the city, as well as home to Broadway Market and Morgan Stanley corporate offices. It serves as a popular location for many of Baltimore's marinas with constant activity, packed with countless bars, restaurants, boutiques, and entertainment.

Inner Harbor

Accessible by foot, vehicle, or boat, Inner Harbor is a destination for residents and visitors looking for things to see and do. The area is a hub for learning with the National Aquarium and the Maryland Science Center. The Baltimore Convention Center attracts masses for events while offering a vast array of shopping, dining, and entertainment options.

Mount Vernon

Just north of Downtown, this diverse historic neighborhood is the cultural heart of Baltimore with the Peabody Institute, Walter Arts Museum, and Baltimore Symphony Orchestra. With easy access to all public transit, a mix of young professionals, families, and students bustle between retail on North Charles Street, foodie favorites at Mount Vernon Marketplace, cultural festivals, and vibrant nightlife.

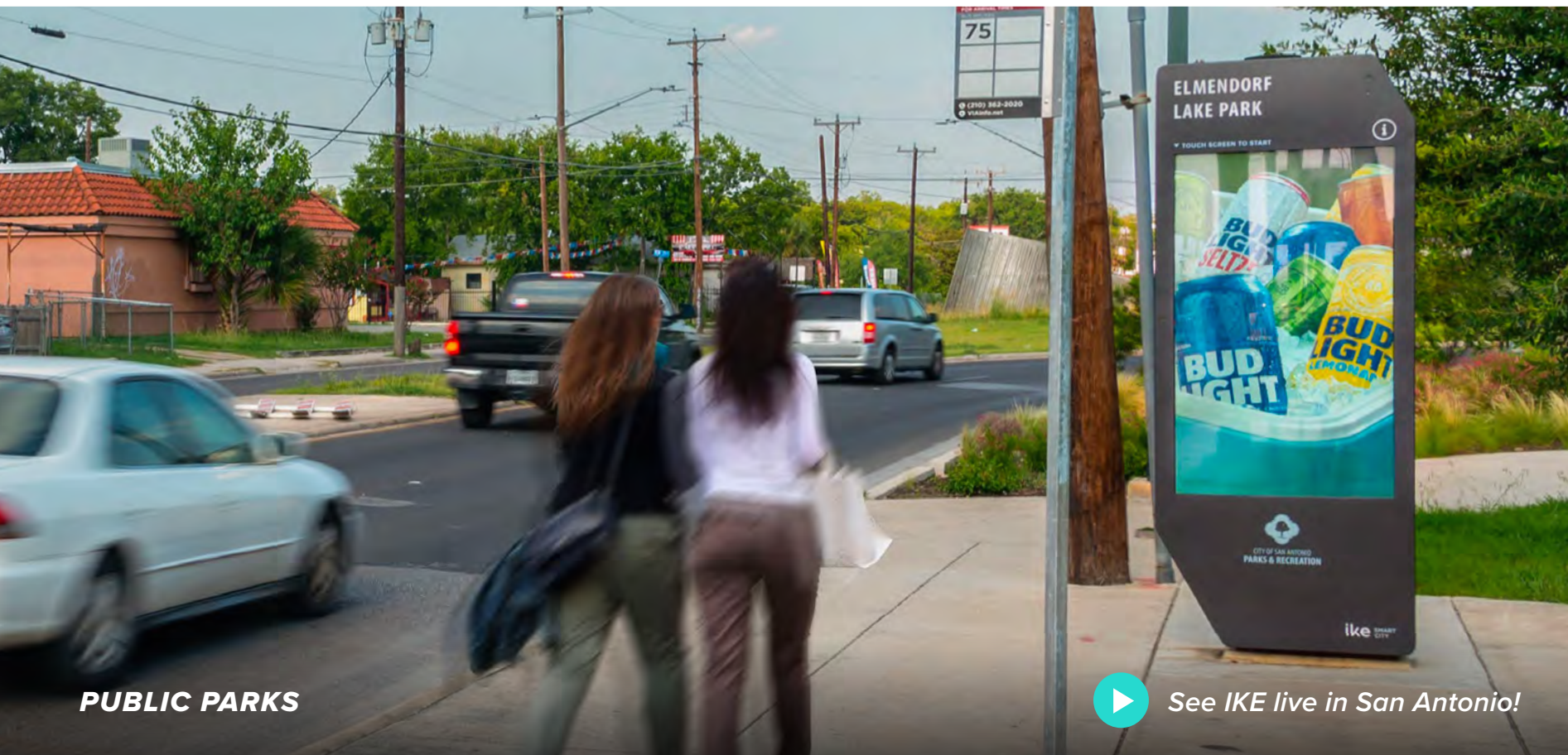





DOWNTOWN

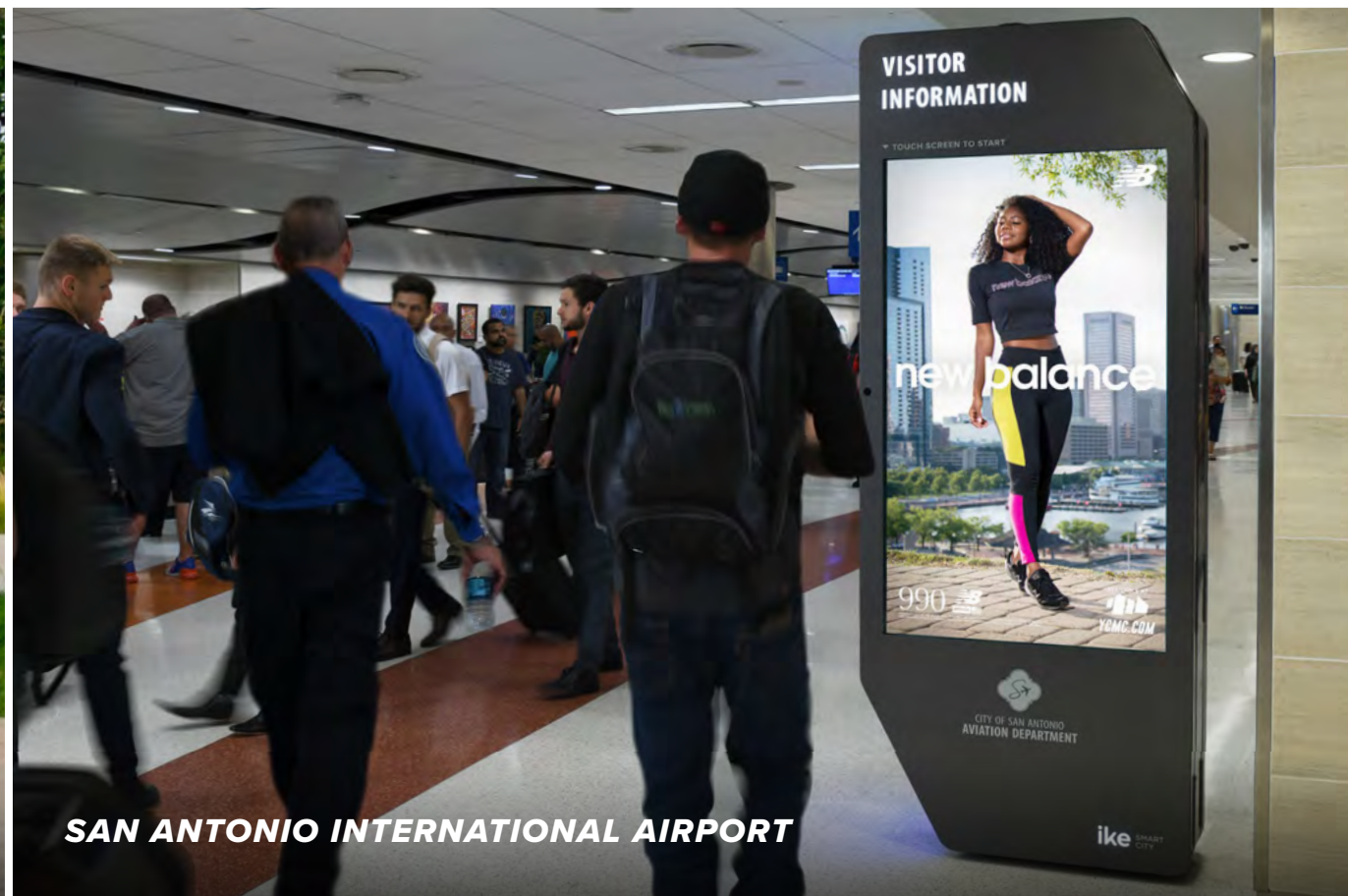


VIA METROPOLITAN TRANSIT CENTERS



PUBLIC PARKS

 See IKE live in San Antonio!



SAN ANTONIO INTERNATIONAL AIRPORT

SAN ANTONIO, TEXAS

DMA RANKING: 31ST

sales@ikesmartcity.com

(614) 294-4898



SAN ANTONIO LOCATIONS

Neighborhoods

**Downtown**
 Downtown San Antonio houses many of the City's famous structures, attractions, and businesses, including the Convention Center and Alamodome. The shade-covered River Walk is lined with shops, cafes, restaurants, bars, and hotels. Market Square offers three blocks of shops and restaurants, while the Shops at River Center features a 1,000-room Marriott, six restaurants, and more than 100 retailers. Bustling with residents, commuters, and visitors to the City, the downtown area offers an abundance of lively pedestrian traffic and activity.

Additional Reach

**VIA Metropolitan Transit Centers**
 San Antonio is home to a robust public transit system that services 37.9 million passenger trips per year. Transit Centers are the heart of the system and serve as the main hubs for residents and visitors to navigate the City. Offering air-conditioned waiting areas with restrooms, vending machines, and staff encourages heavy use. With the recent addition of free Wi-Fi to transit lines, ridership will continue to grow, driving increased traffic to and from these integral transportation hubs.

**Public Parks**
 Boasting more than 150 miles of walking, hiking, and biking trails, San Antonio Parks attract a high volume of traffic and activity. Residents and visitors enjoy the parks in the year-round sunshine, taking advantage of the swimming pools, gymnasiums, sports facilities, recreation centers, and City's Botanical Garden and Conservatory.

**San Antonio International Airport**
 San Antonio International Airport provides commercial airline services for the entire South Texas region. More than 9 million passengers fly into and out of historic San Antonio each year on the 11 airlines that service the airport. Baggage claim areas are littered with an abundance of resident and visitor foot traffic waiting to collect luggage and exit the airport en route to destinations around the City.



= Faces in neighborhood

[Click here for a live map of kiosk locations](#)



SHORT NORTH



UNIVERSITY DISTRICT



BREWERY DISTRICT

COLUMBUS, OHIO

DMA RANKING: 32ND



COLUMBUS LOCATIONS

Neighborhoods

Downtown

Downtown daily commuters and professionals converge on the economic and political City center with major corporations, including the headquarters for Nationwide Insurance, American Electric Power, and Huntington National Bank, as well as the Ohio Statehouse and Supreme Court of Ohio. Thousands of Columbus-area residents travel into Downtown regularly to attend Columbus State Community College as well as exciting shows at historic theaters: Ohio Theatre, Palace Theatre, and The Lincoln.

Arena District

The center for sports and entertainment near Downtown, the Arena District is home to the 20,000-seat Nationwide Arena, 10,000-seat Huntington Park, and 20,000-seat MLS soccer venue, Lower.com Field. Crawling with fans and event-goers, the Arena District is also crowded with visitors to favorite attractions and businesses like North Market, Express Live and the Columbus Convention Center. Bars and restaurants dominate the area as patrons come for food and the Arena District's vibrant night life.

Brewery District

Perfectly south of Downtown, the Brewery District is home to over 28 businesses including breweries, restaurants, and shops in German Village, known for its charming brick houses and streets. This area houses the headquarters for billion-dollar corporation Grange Insurance, along with iconic establishments including Thurman's Café, Schmidt's Sausage House, and a 32-room bookstore called The Book Loft, all easily accessible by foot or vehicle.

Easton

Nestled in an open-air, pedestrian-friendly setting, Easton Town Center boasts more than 1.8 million square feet of mixed-use space and over 300 of the nation's most sought-after retailers. Easton also offers distinctive dining along with a wide variety of entertainment options including a world-class comedy club, Ohio's largest movie theatre, and free outdoor concerts.

Short North

The Short North is a cultural hub with a booming art scene, parks, and restaurants located north of Downtown and south of The Ohio State University. With over 300 businesses, Short North is home to a monthly Gallery Hop, a Halloween party with over 40,000 attendees, Columbus Pride, the Doo Dah parade and other events.

University District

Located just 2 miles north of downtown, THE Ohio State University nationally ranks in the top 3 for enrollment with over 60,000 campus students. For game days and concerts, campus bustles with capacities of over 100,000 at The Shoe and nearly 20,000 at The Schott. To the north and east is a 1-mile stretch with restaurants, bars, entertainment and other activity.

[Click here for a live map of kiosk locations](#)



OVER-THE-RHINE (OTR)

CINCINNATI, OHIO

DMA RANKING: 36TH

sales@ikesmartcity.com

(614) 294-4898

ike SMART CITY

CINCINNATI LOCATIONS

Neighborhoods

Downtown/Central Business District

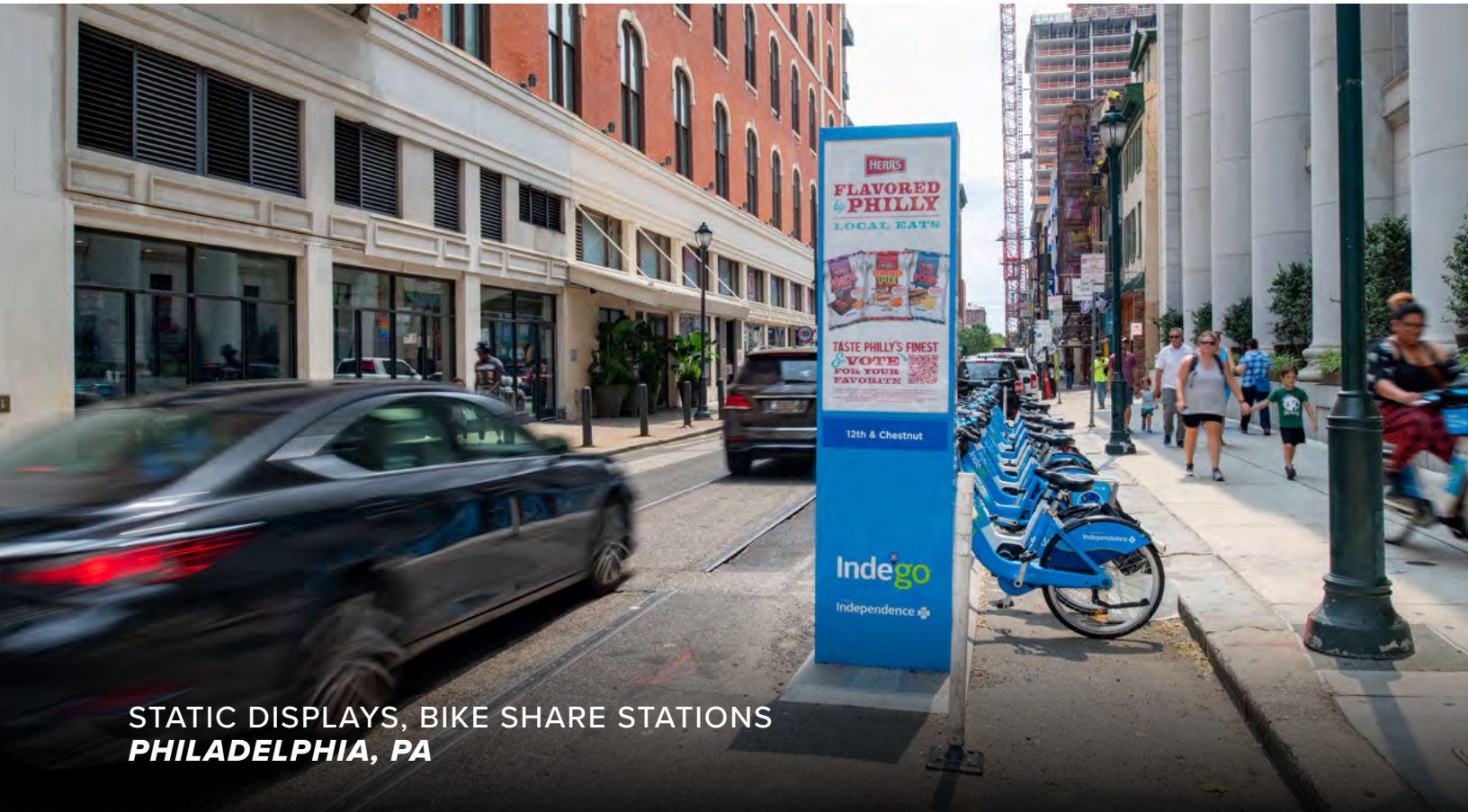
Cincinnati's Central Business District is the heart of Downtown, teeming with professionals heading to high-rise offices and headquarters for Kroger, P&G, and Fifth-Third Bank. With easy access to the freeway and connected by streetcar, this pedestrian-friendly urban core is bursting with activity from the Hard Rock Casino to the Duke Energy Convention Center. Both residents and visitors flock to trendy bars and restaurants, museums, and year-round events at Fountain Park, Taft Theatre, Aronoff Center, Heritage Bank Center, Great American Ball Park (MLB's Reds), and Paycor Stadium (NFL's Bengals).

Over-the-Rhine (OTR)

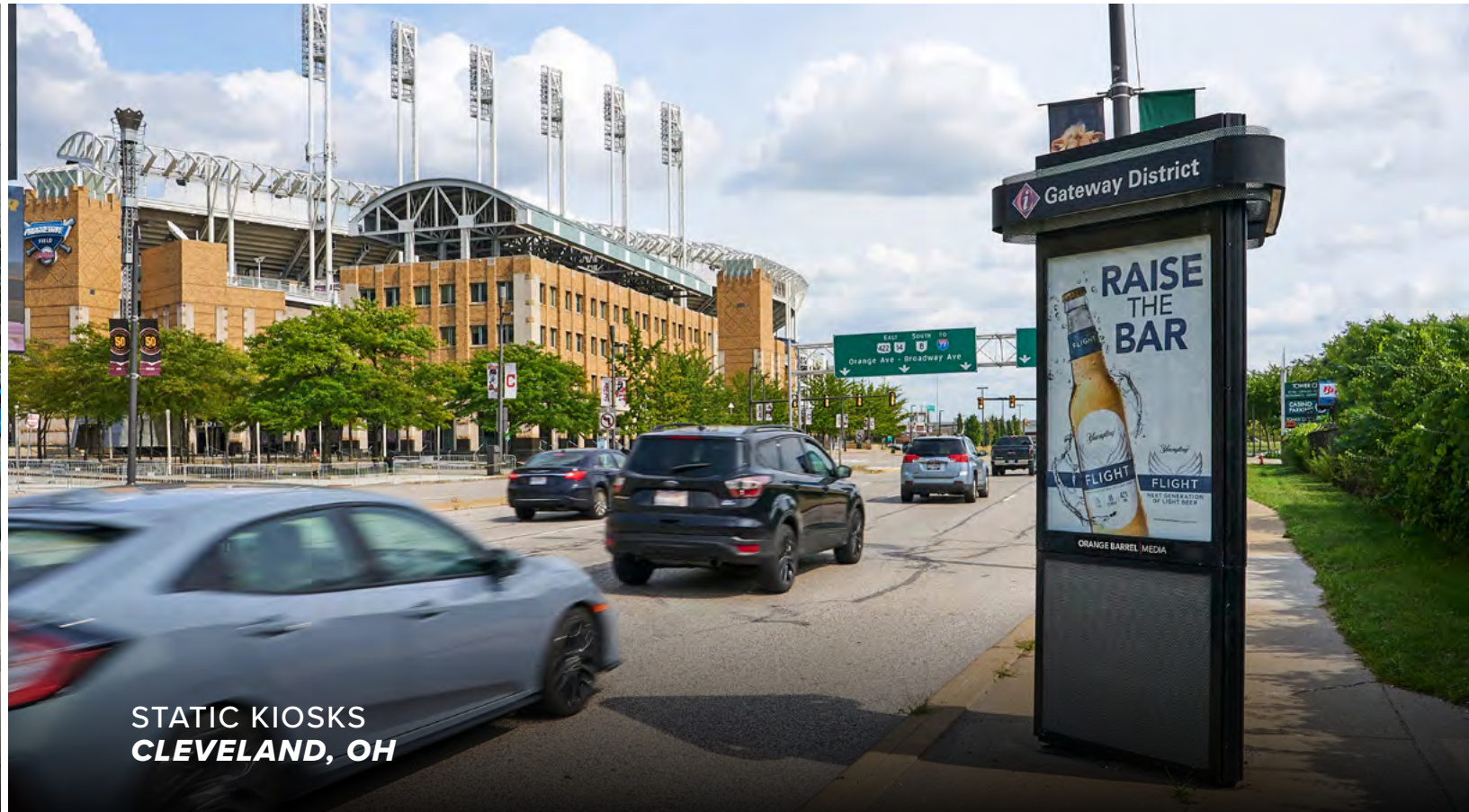
One of the city's oldest neighborhoods, OTR has experienced a renaissance over the last ten years and is now Cincinnati's trendiest and most vibrant area. This cool, cultural hub and entertainment district is crowded with eclectic hipsters, foodies, fashionistas, and artists heading to local favorites: Rhinegeist Brewery, Taste of Belgium, Homage, Bakersfield, Coffee Emporium, and Findlay Market, Cincinnati's largest farmers' market. Easily accessible by freeway and Cincinnati Bell Connector streetcar, residents and visitors attend events year-round at Washington Park and the historic Cincinnati Music Hall.



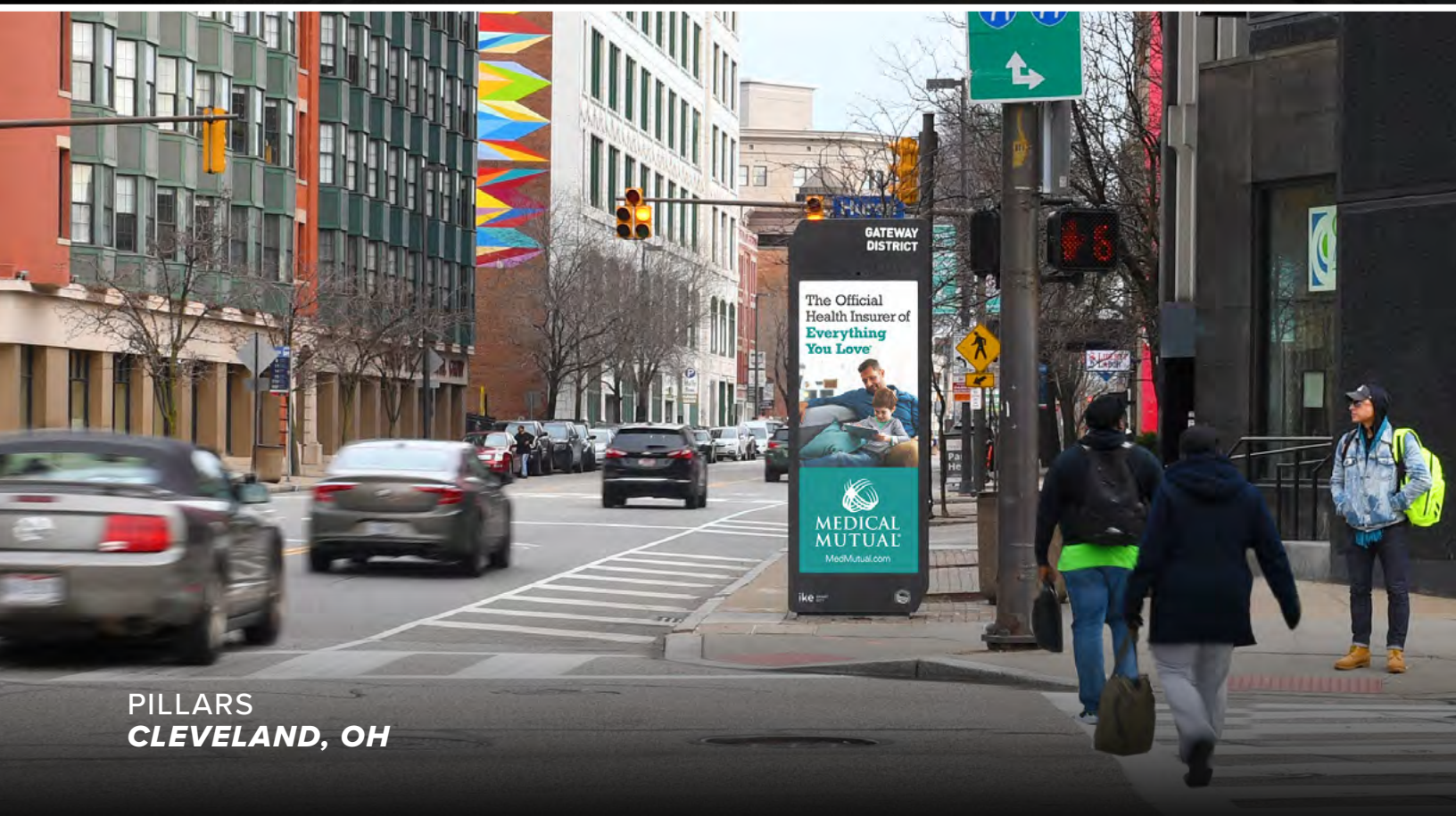
ADDITIONAL STREET FURNITURE



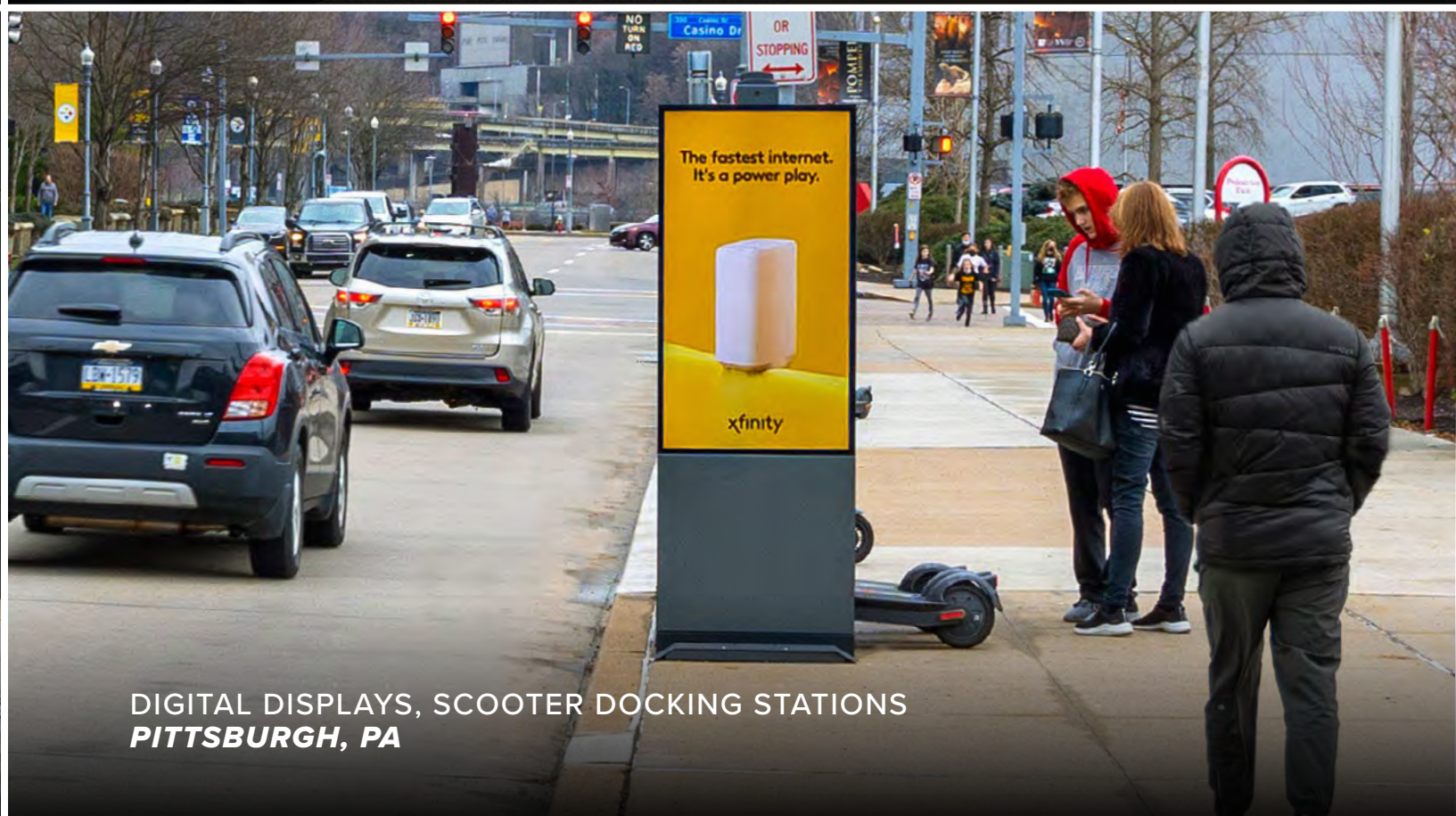
STATIC DISPLAYS, BIKE SHARE STATIONS
PHILADELPHIA, PA



STATIC KIOSKS
CLEVELAND, OH



PILLARS
CLEVELAND, OH



DIGITAL DISPLAYS, SCOOTER DOCKING STATIONS
PITTSBURGH, PA

**STATIC KIOSKS
BIKE SHARE STATIONS**



CENTER CITY

PHILADELPHIA, PENNSYLVANIA

DMA RANKING: 4TH

sales@ikesmartcity.com

(614) 294-4898

ike SMART CITY

PHILADELPHIA LOCATIONS

Neighborhoods

Center City
 Center City is the heart of Philadelphia and the bustling central hub of business and culture. Millions of visitors pay homage to Independence Hall and the Liberty Bell. Foodies flock to **Reading Terminal Market**, an urban farmers’ market with over 80 eateries and specialty shops. The iconic attractions, including City Hall at **Logan Square**, are close to the diverse and historic neighborhoods of **Old City**, **Rittenhouse Square**, **Washington Square West**, packed with upscale boutiques, trendy restaurants, live music, cultural events, and nightlife.

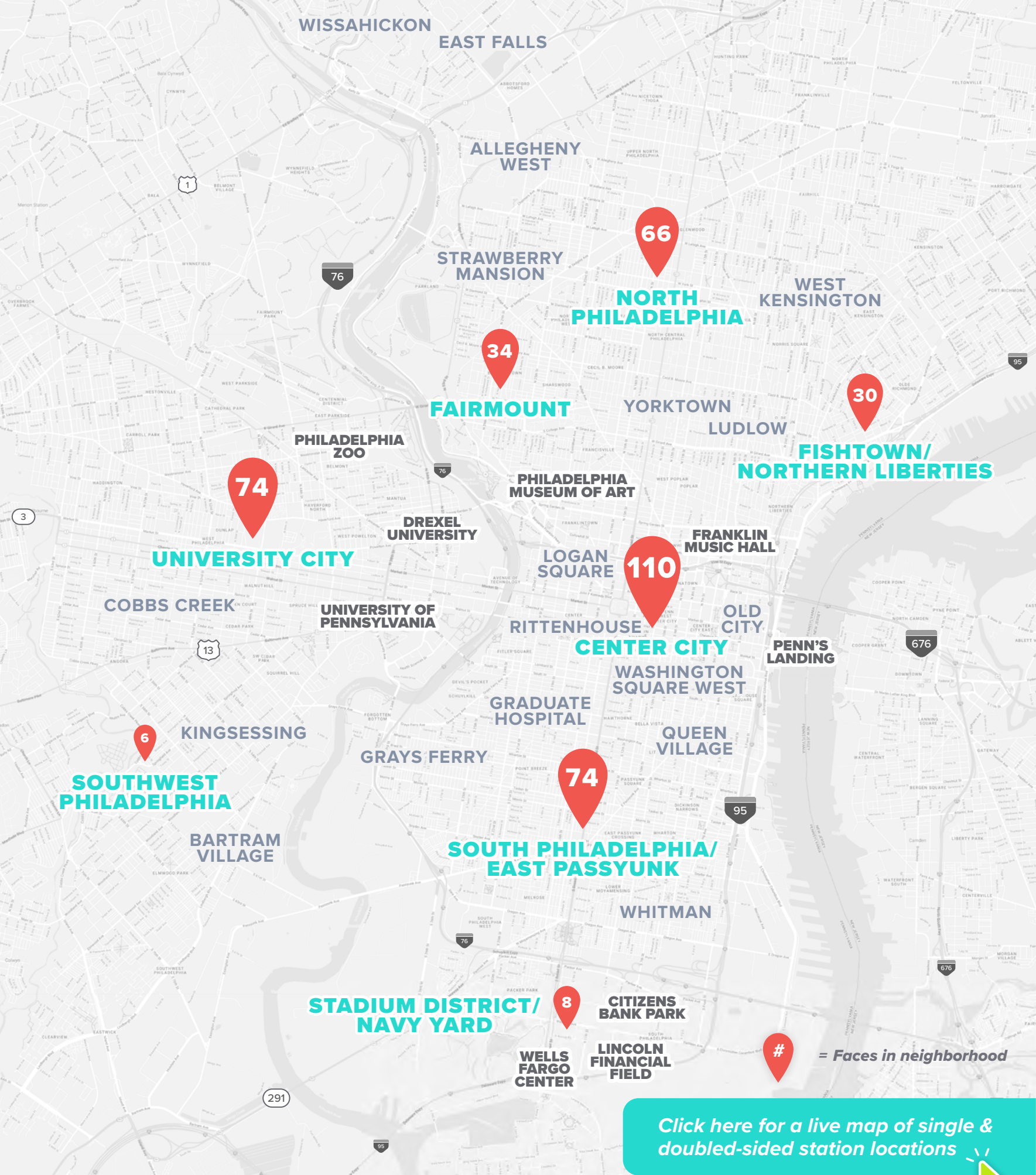
South Philadelphia/East Passyunk
 Renowned as one of the “Best Foodie Streets in America,” East Passyunk’s one-mile walkable street has over 60 restaurants, 50 shops, and 160 businesses. A diverse mix of long-time residents and young professionals frequent the area’s popular bars, boutiques, and eateries.

Fairmount (Northwest)
 With a constant flow of people reenacting Rocky atop the steps at the **Philadelphia Museum of Art**, Fairmount is a vibrant community with crowds exploring the world-class art museums and commercial areas of Girard & Fairmount Ave, as well as endless events and festivals.

Fishtown/Northern Liberties (Northeast)
 Young and hip, Fishtown is overflowing with creative energy and setting trends in a hive of activity around the neighborhood’s cool bars, eclectic shops, live music venues, and art galleries. Northern Liberties, between Fishtown and Old City, is filled with young professionals and entrepreneurs in its upscale residences and street-lined shops and cafes.

Stadium District/Navy Yard
 The **South Philadelphia Sports Complex** is home to sports venues for the city’s major league sports teams: NBA’s 76ers, NHL’s Flyers, NFL’s Eagles, and MLB’s Phillies, hosting 7 million visitors at over 375 events annually. Navy Yard is a nearby revitalized community of residential, office, and ever-evolving spaces of innovation and research.

University City (West)
 Across the river from Center City, this district serves as the academic hub as home to both **University of Pennsylvania** (Penn) and **Drexel University**. Over 50,000 students fill sidewalks, dashing between classes, home, street-food stops, and late-night hangouts.



PILLARS
STATIC KIOSKS
DIGITAL KIOSKS



TOWER CITY DISTRICT



MIDTOWN



PLAYHOUSE SQUARE

CLEVELAND, OHIO

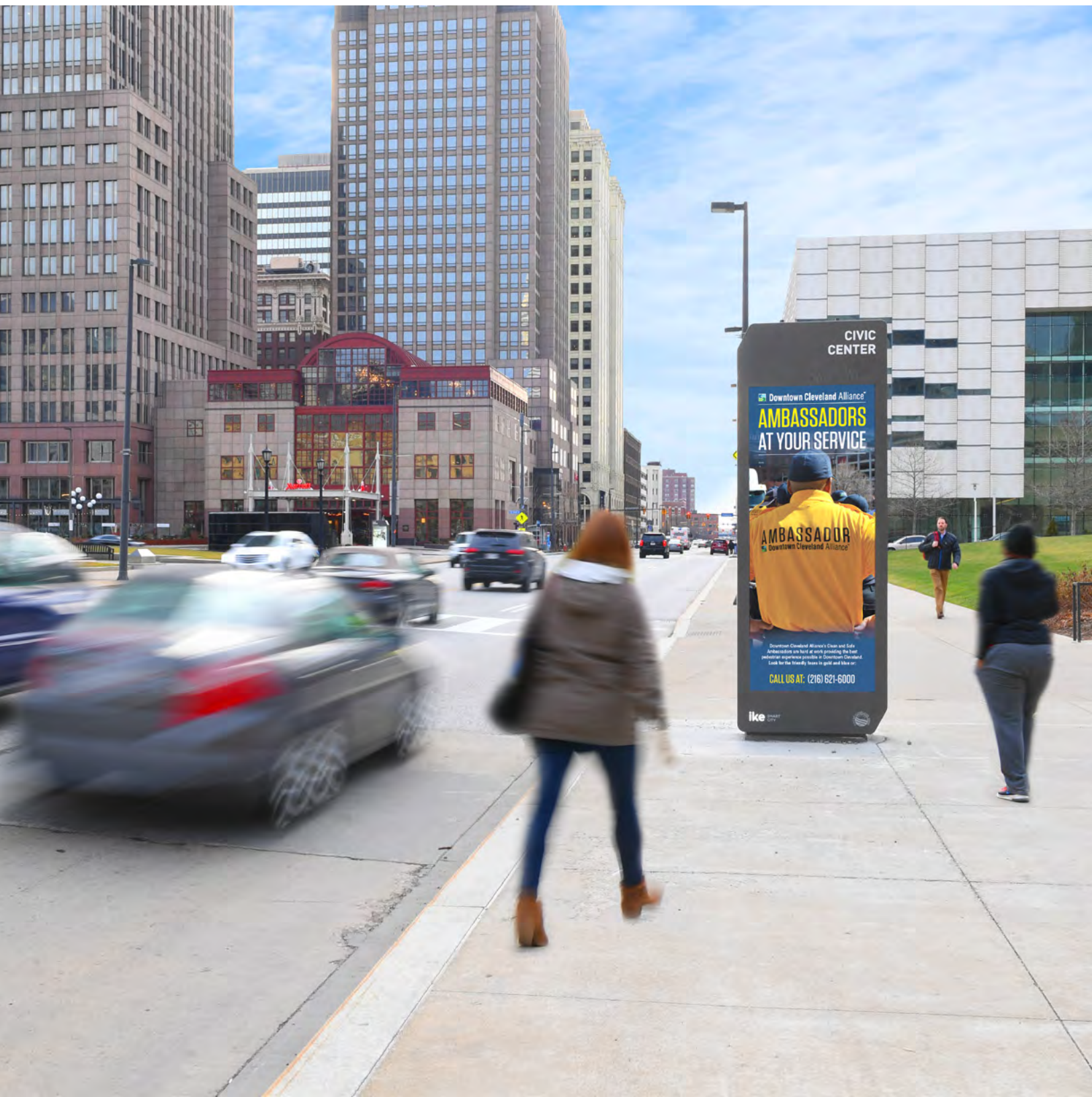
DMA RANKING: 19TH

sales@ikesmartcity.com

(614) 294-4898

ike SMART CITY

PILLARS

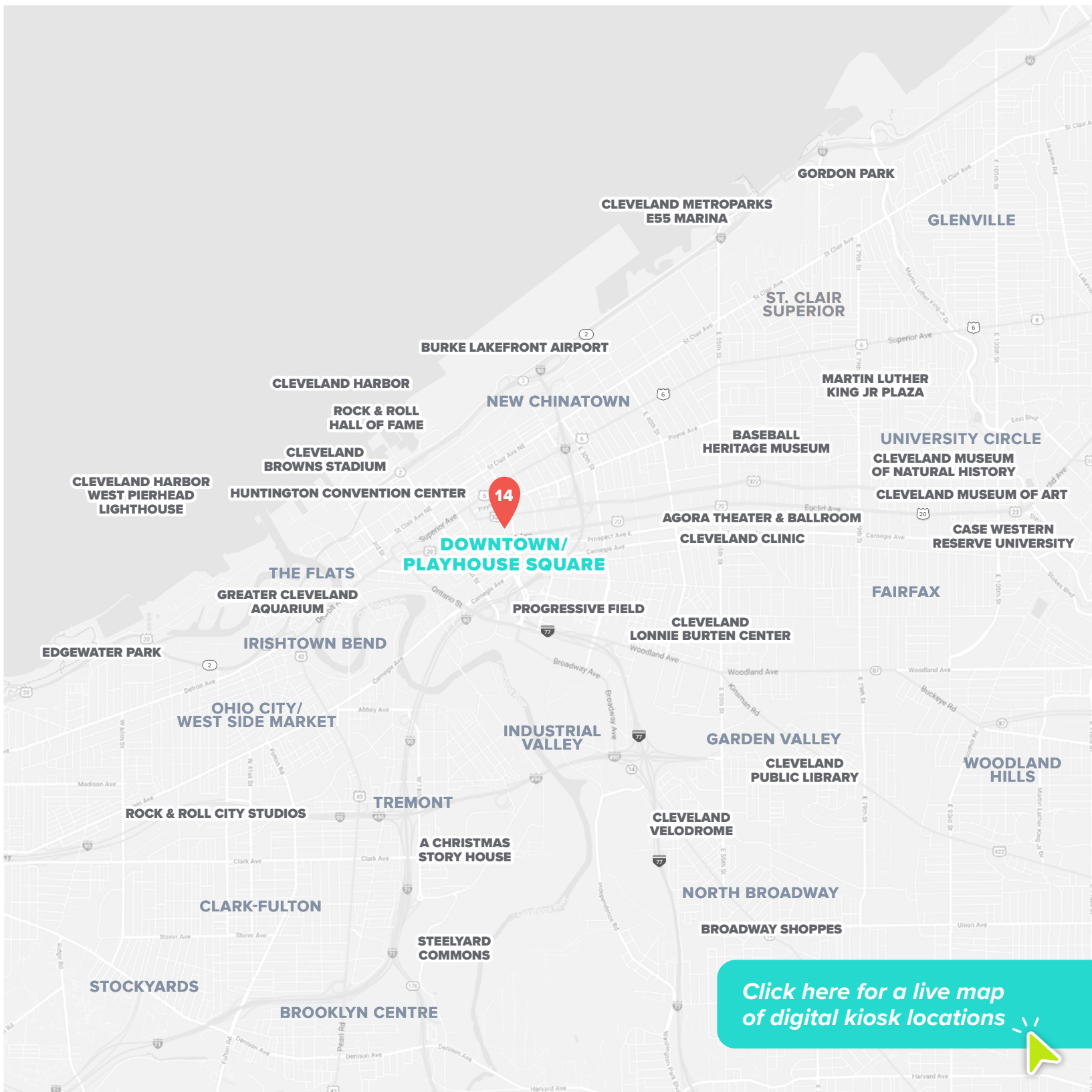


[Click here for a live map of pillar locations](#)

STATIC KIOSKS



DIGITAL KIOSKS



DIGITAL DISPLAYS -
SCOOTER STATIONS



DOWNTOWN



BLOOMFIELD



NORTH SHORE

PITTSBURGH, PENNSYLVANIA

DMA RANKING: 26TH

PITTSBURGH LOCATIONS

Major League Stadiums

Acrisure Stadium

Sports fans and concert goers pour into Acrisure Stadium, the 68,000-seat home NFL's Steelers, for football, big-name concerts, and annual festivals. It is close to the Carnegie Science Center and the River Casino, drawing people year-round from day into night.

PNC Park

With amazing views of Downtown along the Ohio and Allegheny Rivers, PNC Park seats 38,000 as the home of MLB's Pirates and is steps from cultural destinations: Andy Warhol Museum, The Mattress Factory (contemporary art), and the Children's Museum.

Neighborhoods

Downtown

Downtown Pittsburgh, nicknamed the Golden Triangle, is the City's dynamic economic center with a mix of skyscrapers, historic sites, and year-round cultural activities and festivals.

East Liberty/Bloomfield

These vibrant residential neighborhoods boast bustling commercial corridors of boutiques, eclectic dining, coffee houses, and art galleries extending along Penn Avenue to East Liberty, a hub for entrepreneurs and startup companies.

Lawrenceville

As the largest and hippest neighborhood, Lawrenceville is the spot for creatives, artists, and innovators at local galleries, coffee shops, brew pubs, and night life.

Oakland

Oakland is a dynamic neighborhood with over 40,000 students attending three universities, including University of Pittsburgh, Carnegie Mellon University, and six main hospitals. It also has 40 museums, theaters, and cultural institutions, drawing 1.8 million annually.

South Side Flats/South Shore

Southside Flats is the premier destination for nightlife in Pittsburgh with a multitude of bars, brewpubs, coffee shops, cafes, casual restaurants, and lively music venues. South Shore is home a 5000-seat soccer stadium and an immense shopping and dining complex.

Strip District

Next to Downtown, The Strip is a popular shopping and foodie destination with international stores, shops, and cuisine alongside coffee roasters, diners, and casual bars.



Thank you

GET IN TOUCH

sales@ikesmartcity.com

250 N. Hartford Avenue, Columbus, OH 43222

614.294.4898

ikesmartcity.com